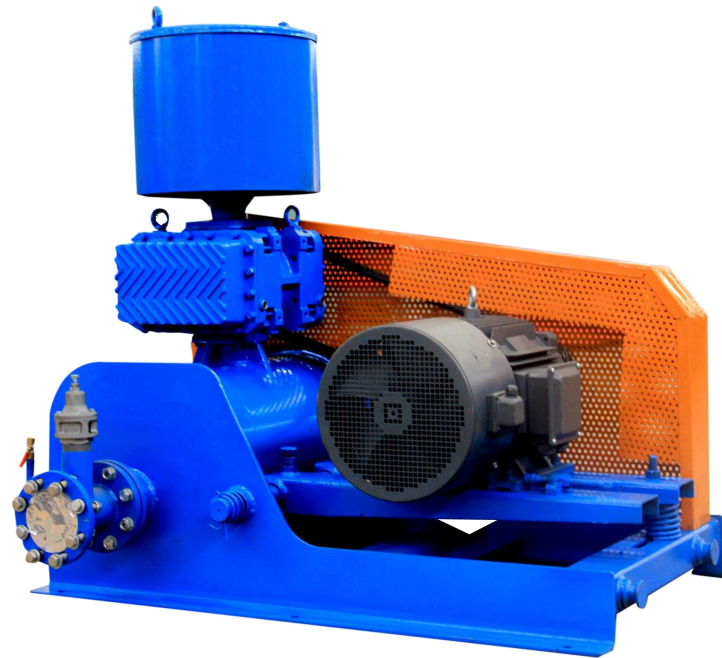


Воздуходувки РУТС

HG HG-V



Технические параметры воздуходувок серии HG

Давление [бар]. Производительность [м³/мин]. Скорость вращения ротора [об/мин].
 Мощность вала [кВт 1] Мощность электродвигателя [кВт 2]

Модель	Об/мин	0.1 бар			0.2 бар			0.3 бар			0.4 бар			0.5 бар			0.6 бар			0.7 бар			0.8 бар			0.9 бар			1 бар		
		м³/мин	кВт 1	кВт2	м³/мин	кВт 1	кВт2	м³/мин	кВт1	кВт2	м³/мин	кВт1	кВт2	м³/мин	кВт1	кВт2	м³/мин	кВт1	кВт2	м³/мин	кВт1	кВт2	м³/мин	кВт1	кВт2	м³/мин	кВт1	кВт2	м³/мин	кВт1	кВт2
HG-50	2500	2.34	1.2	1.5	2	1.7	2.2	1.82	2.1	3	1.72	2.6	4	1.6	3.1	4	1.54	3.6	5.5	1.43	4	5.5	1.38	4.5	5.5						
	3000	2.93	1.4	2.2	2.59	1.9	3	2.41	2.5	3	2.21	3.1	4	2.06	3.7	5.5	1.93	4.2	5.5	1.88	4.8	7.5	1.8	5.4	7.5	1.7	6	7.5			
	3500	3.51	1.6	2.2	3.17	2.2	3	2.99	2.9	4	2.79	3.6	5.5	2.64	4.2	5.5	2.51	4.9	7.5	2.38	5.6	7.5	2.25	6.2	7.5	2.18	6.9	11	2.1	7.6	11
	4000	4.1	1.8	2.2	3.76	2.5	3	3.58	3.3	4	3.38	4.1	5.5	3.23	4.8	7.5	3.1	5.6	7.5	2.96	6.3	7.5	2.84	7.1	11	2.77	7.9	11	2.7	8.6	11
	4500	4.68	2	3	4.34	2.8	4	4.16	3.7	5.5	3.95	4.5	5.5	3.81	5.4	7.5	3.68	6.3	7.5	3.53	7.1	11	3.42	8	11	3.35	8.8	11	3.29	9.7	15
HG-65	3000	4.95	2.2	3	4.43	3.1	4	4.1	4.1	5.5	3.75	5.1	7.5	3.5	6	7.5	3.3	7	11	3.14	8	11	3	8.9	11	2.89	9.9	15	2.82	10.8	15
	3500	5.93	2.5	3	5.41	3.7	5.5	5.08	4.8	7.5	4.73	5.9	7.5	4.48	7	11	4.28	8.1	11	4.12	9.3	11	3.98	10.4	15	3.87	11.5	15	3.8	12.6	15
	4000	6.91	2.9	4	6.39	4.2	5.5	6.06	5.5	7.5	5.71	6.7	11	5.46	8	11	5.26	9.3	11	5.1	10.6	15	4.96	11.9	15	4.85	13.1	18.5	4.78	14.4	18.5
	4500	7.89	3.2	4	7.73	4.7	5.5	7.04	6.1	7.5	6.69	7.6	11	6.44	9	11	6.24	10.5	15	6.08	11.9	15	5.94	13.3	18.5	5.83	14.8	18.5	5.76	16.2	22
HG-80	2500	7.86	2.9	4	7.38	4.4	5.5	7.05	5.9	7.5	6.76	7.3	11	6.53	8.8	11	6.34	10.3	15	6.18	11.8	15	6.04	13.3	18.5	5.93	14.8	18.5	5.83	16.3	22
	2800	8.98	3.3	4	8.5	4.9	7.5	8.17	6.6	11	7.89	8.2	11	7.67	9.9	15	7.48	11.5	15	7.31	13.2	18.5	7.18	14.8	18.5	7.06	16.5	22	6.95	18.1	22
	3000	9.72	3.6	5.5	9.25	5.4	7.5	8.92	7.1	11	8.64	8.9	11	8.42	10.7	15	8.23	12.5	15	8.07	14.3	18.5	7.93	16	18.5	7.81	17.8	22	7.71	19.6	30
	3300	10.8	4	5.5	10.4	5.9	7.5	10.1	7.9	11	9.77	9.8	15	9.55	11.8	15	9.36	13.8	18.5	9.2	15.7	18.5	9.06	17.7	22	8.94	19.6	30	8.83	21.6	30
	3500	11.5	4.2	5.5	11.1	6.3	7.5	10.8	8.3	11	10.5	10.4	15	10.3	12.5	15	10.1	14.6	18.5	9.95	16.6	22	9.81	18.7	22	9.69	20.8	30	9.59	22.9	30
	3800	12.7	4.6	5.5	12.2	6.8	11	11.8	9.1	11	11.6	11.3	15	11.4	13.6	18.5	11.2	15.8	18.5	11.1	18.1	22	10.9	20.3	30	10.8	22.6	30	10.7	24.8	30
HG-100	2500	11.9	4.1	5.5	11.2	6.3	7.5	10.8	8.6	11	10.3	10.8	15	10	13	15	9.73	15.2	18.5	9.48	17.5	22	9.26	19.7	30	9.08	21.9	30	8.91	24.1	30
	2800	13.6	4.7	5.5	12.9	7.2	11	12.5	9.7	15	12	12.2	15	11.7	14.7	18.5	11.4	17.2	22	11.2	19.7	30	11	22.2	30	10.8	24.7	30	10.6	27.2	37
	3000	14.7	5.1	7.5	14.1	7.8	11	13.7	10.4	15	13.2	13.1	18.5	12.8	15.8	18.5	12.6	18.5	22	12.3	21.2	30	12.1	23.8	30	11.9	26.5	37	11.7	29.2	37
	3300	16.4	5.5	7.5	15.7	8.5	11	15.4	11.4	15	14.9	14.4	18.5	14.6	17.3	22	14.3	20.2	30	14	23.2	30	13.8	26.1	30	13.6	29.1	37	13.5	32	37

	3500	17.5	5.8	7.5	16.9	8.9	11	16.5	12.1	15	16	15.2	18.5	15.7	18.3	22	15.4	21.4	30	15.2	24.5	30	14.9	27.7	37	14.8	30.8	37	14.6	33.9	45
	3800	19.2	6.3	7.5	18.5	9.7	15	18.2	13	15	17.7	16.4	22	17.4	19.8	30	17.1	23.2	30	16.9	26.6	37	16.7	30	37	16.5	33.3	45	16.3	36.7	45
HG-125	2000	19.5	5.6	7.5	18.6	9.2	11	18	12.9	15	17.5	16.5	22	17.1	20.2	30	16.7	23.8	30	16.4	27.9	37	16.2	31.1	37	16	34.8	45	15.8	38.4	45
	2300	22.8	6.4	7.5	21.9	10.6	15	21.4	14.8	18.5	20.8	18.9	22	20.4	23.1	30	20	27.3	37	19.8	31.5	37	19.5	35.7	45	19.4	39.9	55	19.2	44	55
	2600	26.1	7.2	11	25.2	12	15	24.7	16.7	22	24.1	21.4	30	23.7	26.2	37	23.4	30.9	37	23.1	35.6	45	22.9	40.4	55	22.7	45.1	55	22.5	49.8	75
	2800	28.3	7.8	11	27.5	12.9	15	26.8	18	22	26.4	23.1	30	26	28.2	37	25.6	33.3	45	25.4	38.4	45	25.1	43.5	55	24.9	48.6	55	24.7	53.7	75
HG-150	2000	31.6	8.5	11	30.3	14.3	18.5	29.4	20.1	30	28.7	25.9	30	28.2	31.8	37	27.7	37.6	45	27.3	43.4	55	27	46.7	55	26.7	55	75	26.5	60.8	75
	2300	36.9	9.7	15	35.7	16.3	22	34.9	23	30	34.2	29.7	37	33.6	36.4	45	33.2	43	55	32.8	49.7	75	32.5	56.4	75	32.2	63	75	32	69.7	90
	2600	42.3	10.8	15	41.1	18.3	22	40.4	25.9	30	39.6	33.4	45	39.1	40.9	55	38.6	48.5	55	38.2	56	75	37.9	63.5	75	37.7	71.1	90	37.4	78.6	90
	2800	45.9	11.6	15	44.7	19.7	30	43.8	27.8	37	43.2	35.9	45	42.7	44	55	42.3	52.2	75	41.9	60.3	75	41.6	68.4	90	41.3	76.5	90	41.1	84.6	110
HG-175	1750	37.7	8.7	11	36.2	15.6	18.5	35.1	22.5	30	34.1	29.4	37	33.2	36.6	45	32.5	43.2	55	31.8	50.1	75	31.1								
	2000	43.6	10.3	15	42.1	18.2	22	41	26.1	37	40	33.9	45	39.2	41.8	55	38.4	49.7	75	37.7	57.6	75	37								
	2300	50.7	12.5	15	49.2	21.5	30	48	30.6	37	47.1	39.7	55	46.2	48.7	75	45.5	57.8	75	44.7	66.9	90	44.1								
	2600	57.8	14.9	18.5	56.3	25.2	30	55.1	35.4	45	54.2	45.7	55	53.3	55.9	75	52.5	66.2	90	51.8	76.4	90	51.2								
	2800	62.5	16.6	22	61	27.8	37	59.9	38.7	55	58.9	49.7	75	58	60.8	75	57.3	71.8	90	56.6	82.9	110	55.9								
HG-200	1450	60.7	15.4	18.5	58.7	26.3	37	57.3	37.3	45	56.1	48.3	55	55.2	59.3	75	54.4	70.3	90	53.8	81.3	110	53.1	92.3	110	52.6	103	132	52.2	114	132
	1600	67.6	16.8	22	65.6	28.9	37	64.2	41	55	63.1	53.2	75	62.1	65.3	75	61.3	77.4	90	60.7	89.5	110	60.1	102	132	59.6	114	132	59.2	126	160
	1750	74.5	18.3	22	72.5	31.5	37	71.1	44.8	55	70	58.1	75	69.1	71.3	90	68.3	84.6	110	67.6	97.9	132	67.1	111	160	66.6	124	160	66.2	138	160
	1900	81.4	19.8	30	79.5	34.2	45	78.1	48.6	55	77	63	75	76.1	77.5	90	75.3	91.9	110	74.6	106	132	74.1	121	160	73.6	135	160	73.1	150	185
HG-250	1450	77.9	18.7	22	75.7	32.8	45	74.1	46.7	55	72.9	60.9	75	71.9	74.9	90	71.1	89	110	70.4	103	132	69.9	117	160						
	1600	86.7	20.6	30	84.5	36.2	45	83	51.7	75	81.8	67.2	90	80.8	82.8	110	80	98.3	132	79.3	114	132	78.8	129	160						
	1750	95.5	22.5	30	93.4	39.5	55	91.8	56.5	75	90.6	73.5	90	89.7	90.5	110	88.9	108	132	88.2	125	160	87.8	142	160						
	1900	104	24.5	30	102	43	55	101	61.5	75	99.5	80.1	110	98.6	98.6	132	97.8	117	160	97.1	136	160	96.6	154	185						
HG-300	1100	102.1	26.5	30	98.7	44.6	55	96.1	62.9	75	93.9	80.5	90	91.9	98.6	110	90.2	116.6	132	88.5	134.6	160	87	152.6	185	85.6	170.6	200	84.3	188.8	220
	1250	117.1	32.7	37	113.7	53.5	75	111.1	73.5	90	108.9	94.4	110	107	114.5	132	105.2	135.3	160	103.6	155.8	185	102.1	176.4	200	100.7	196.8	220	99.3	217.3	250
	1350	127.1	37.4	45	123.7	59.5	75	121.1	81.5	90	118.9	104.3	132	117	126.4	160	115.2	148.4	185	113.6	170.5	200	112.1	192.7	220	110.7	214.7	250	109.3	236.4	280
	1450	137.2	42.6	55	133.8	66.7	75	131.2	90.5	110	128.9	114.3	132	127	137.6	160	125.2	161.7	185	123.6	185.5	220	122.1	209.3	250	120.7	232.5	280	119.4	256.7	280
	1550	147.2	50.4	55	143.8	75.7	90	141.2	101.3	132	139	126.7	160	137	151.5	185	135.3	177.4	200	133.7	202.8	250	132.1	227.6	250	130.7	253.5	280			

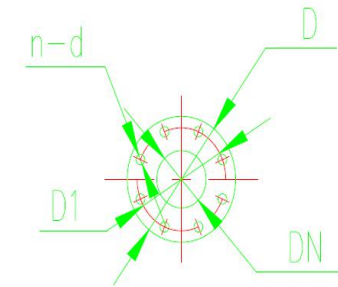
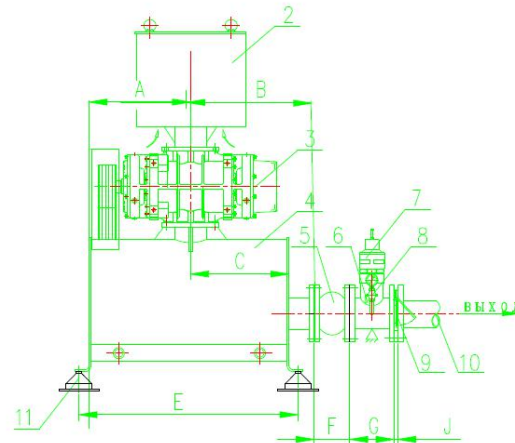
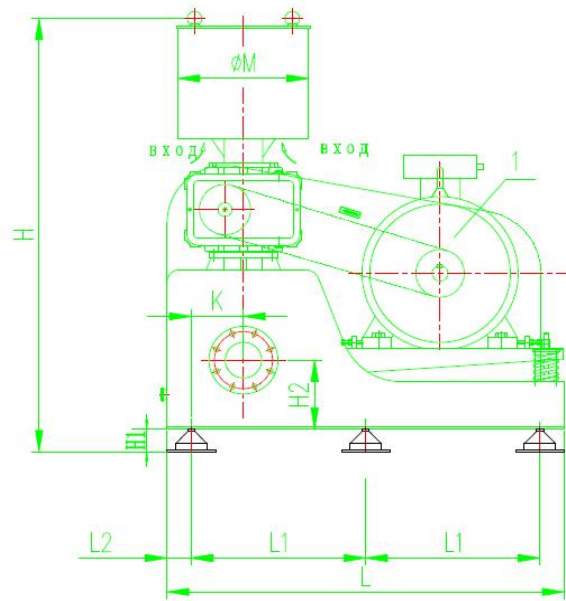
Технические параметры воздуходувок серии HG-V

Давление [бар]. Производительность [м³/мин]. Скорость вращения ротора [об/мин].
 Мощность вала [кВт 1] Мощность электродвигателя [кВт 2]

Модель	Об/мин	Вакуум														
		0.1 бар			0.2 бар			0.3 бар			0.4 бар			0.5 бар		
		м ³ /мин	кВт 1	кВт 2	м ³ /мин	кВт 1	кВт 2	м ³ /мин	кВт 1	кВт 2	м ³ /мин	кВт 1	кВт 2	м ³ /мин	кВт 1	кВт 2
HG-50V	3000	2.88	1.4	2.2	2.37	1.9	3	2.03	2.5	3	1.85	3.1	4			
	3500	3.46	1.6	2.2	2.95	2.2	3	2.61	2.9	4	2.33	3.6	5.5			
	4000	4.05	1.8	2.2	3.54	2.5	3	3.2	3.3	4	2.92	4.1	5.5	2.68	4.8	7.5
	4500	4.63	2	3	4.12	2.8	4	3.78	3.7	5.5	3.5	4.5	5.5	3.16	5.4	7.5
HG-65V	3500	5.85	2.5	3	5.16	3.7	5.5	4.66	4.8	5.5	4.22	5.9	7.5			
	4000	6.83	2.9	4	6.14	4.2	5.5	5.64	5.5	7.5	5.2	6.7	11	4.86	8	11
	4500	7.81	3.2	4	7.12	4.7	5.5	6.62	6.1	7.5	6.18	7.6	11	5.84	9	11
HG-80V	2500	7.8	2.9	4	7.19	4.4	5.5	6.65	5.9	7.5	6.11	7.3	11	5.52	8.8	11
	2800	8.91	3.3	4	8.31	4.9	7.5	7.78	6.6	11	7.24	8.2	11	6.66	9.9	15
	3000	10.9	3.6	5.5	9.06	5.4	7.5	8.53	7.1	11	8	8.9	11	7.42	10.7	15
	3300	10.9	4	5.5	10.2	5.9	7.5	9.67	7.9	11	9.14	9.8	15	8.57	11.8	15
	3500	11.5	4.2	5.5	10.9	6.3	7.5	10.4	8.3	11	9.9	10.4	15	9.33	12.5	15
	3800	12.7	4.6	5.5	12.1	6.8	11	11.6	9.1	11	11	11.3	15	10.5	13.6	18.5
HG-100V	2500	11.9	4.1	5.5	11	6.3	7.5	10.2	8.6	11	9.41	10.8	15	8.55	13	15
	2800	13.6	4.7	5.5	12.7	7.2	11	11.9	9.7	15	11.1	12.2	15	10.3	14.7	18.5
	3000	14.7	5.1	7.5	13.8	7.8	11	13	10.4	15	12.3	13.1	18.5	11.4	15.8	18.5
	3300	16.4	5.5	7.5	15.5	8.5	11	14.7	11.4	15	14	14.4	18.5	13.2	17.3	22
	3500	17.5	5.8	7.5	16.6	8.9	11	15.9	12.1	15	15.1	15.2	18.5	14.3	18.3	22
	3800	19.2	6.3	7.5	18.3	9.7	15	17.6	13	15	16.8	16.4	22	16	19.8	30
HG-125V	2000	19.5	5.6	7.5	18.2	9.2	11	17.2	12.9	15	16.2	16.5	22	15.1	20.2	30
	2300	22.7	6.4	7.5	21.6	10.6	15	20.6	14.8	18.5	19.6	18.9	22	18.5	23.1	30
	2600	26.1	7.2	11	24.9	12	15	23.9	16.7	22	23	21.4	30	21.9	26.2	37
	2800	26.3	7.8	11	27.1	12.9	15	26.2	18	22	25.2	23.1	30	24.2	28.2	37
HG-150V	2000	31.4	8.5	11	29.8	14.3	18.5	28.4	20.1	30	27	25.9	30	25.5	31.8	37
	2300	36.8	9.7	15	35.2	16.3	22	33.9	23	30	32.5	29.7	37	31	36.4	45

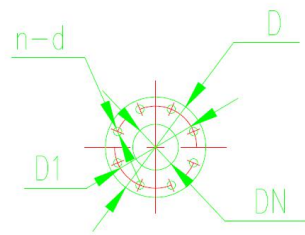
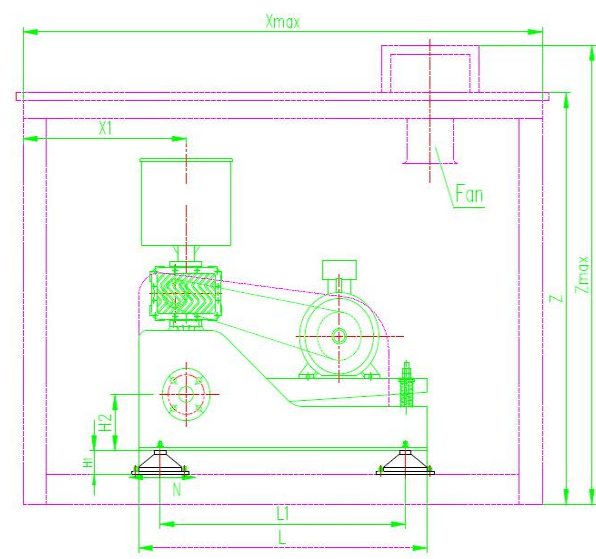
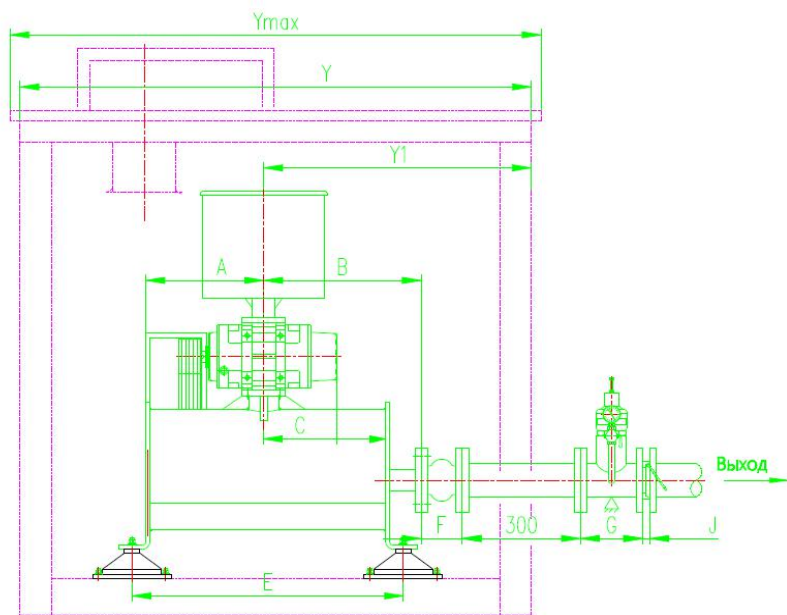
	2600	42.1	10.8	15	40.6	18.3	22	39.3	25.9	30	38	33.4	45	36.5	40.9	55
	2800	45.7	11.6	15	44.2	19.7	30	42.9	27.8	37	41.7	35.9	45	40.2	44	55
HG-175V	1750	37.5	8.7	11	35.6	15.6	18.5	33.9	22.5	30	32.2	29.4	37	30.1	36.3	45
	2000	43.4	10.3	15	41.5	18.2	22	39.8	26.1	37	38.1	33.9	45	36	41.8	55
	2300	50.5	12.5	15	48.6	21.5	30	46.9	30.6	37	45.2	39.7	55	43	48.7	75
	2600	57.6	14.9	18.5	55.7	25.2	30	54	35.4	45	52.3	45.7	55	50.1	55.9	75
	2800	62.3	16.6	22	60.5	27.7	37	58.7	38.7	55	58.8	49.7	75	54.8	60.8	75
HG-200V	1450	60.4	15.4	18.5	57.8	26.3	37	55.6	37.3	45	53.3	48.3	55	50.8	59.3	75
	1600	67.3	16.8	22	64.9	28.9	37	62.6	41	55	60.3	53.2	75	57.8	65.3	75
	1750	74.2	18.3	22	71.8	31.5	37	69.5	44.8	55	67.3	58.1	75	64.9	71.3	90
	1900	81.1	19.8	30	78.6	34.2	45	76.5	48.6	55	74.3	63	75	71.9	77.5	90
HG-250V	1450	77.5	18.7	22	74.8	32.8	45	72.2	46.8	55	69.7	60.9	75	67	74.9	90
	1600	86.4	20.6	30	83.7	36.2	45	81.1	51.7	75	78.7	67.2	90	76	82.8	110
	1750	95.2	22.5	30	92.5	39.5	55	90	56.5	75	87.6	73.5	90	85	90.5	110
	1900	104	24.5	30	101.1	43	55	98.9	61.5	75	96.5	80.1	110	93.9	98.6	132
HG-300V	1250	116.7	32.5	37	112.4	53.6	75	108.4	73.5	90	104.3	94.4	110	99.7	114.5	132
	1350	126.7	37.8	45	122.4	59.9	75	118.4	81.9	90	114.3	104.3	132	109.7	126.3	160
	1450	136.7	42.5	55	132.4	66.8	75	128.5	90.6	110	124.4	114.3	132	119.7	137.6	160
	1550	146.8	50.5	55	142.5	75.8	90	138.5	101.3	132	134.4	126.6	160	129.7	151.5	185

Размеры комплектность воздуходувки HG

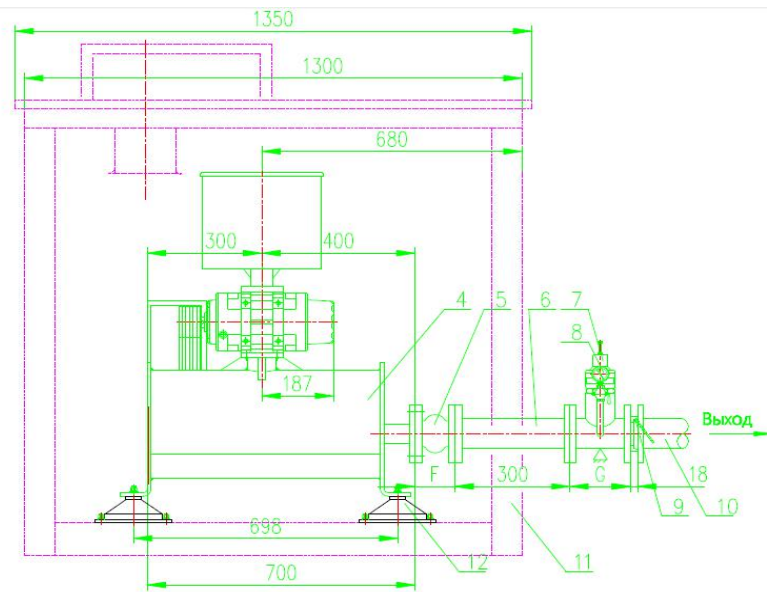
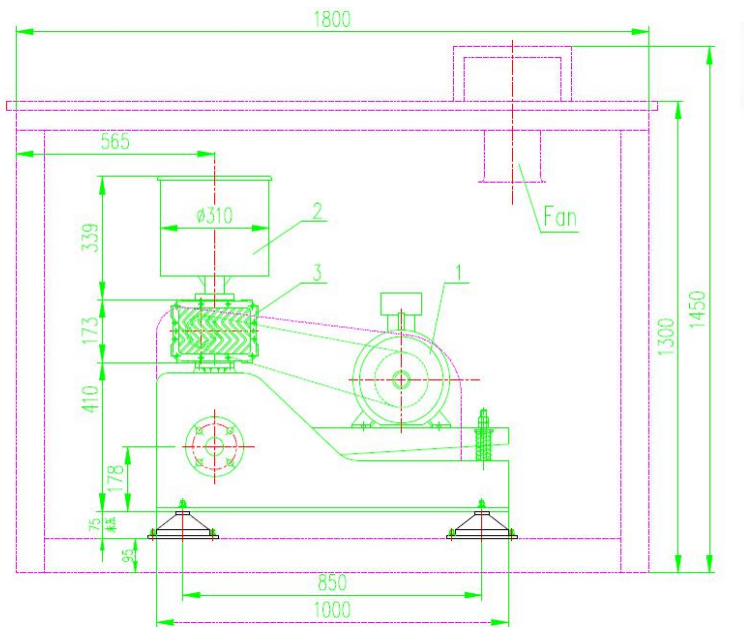


Модель	A	B	C	E	F	G	J	L	L1	L2	K	H	H1	H2	M	DN	D1	D	n	d	Вес (кг)	
HG-50	300	400	320	698	105	140	18	1000	850	75	90	923	56	178	310	$\Phi 50$	$\Phi 125$	$\Phi 165$	4	$\Phi 18$	280	
HG-60	300	400	320	698	115	150	18	1000	850	75	90	923	56	178	310	$\Phi 65$	$\Phi 145$	$\Phi 185$			340	
HG-80	308	510	408	810	135	180	18	1350	600	75	157.5	1314	56	220	420	$\Phi 80$	$\Phi 160$	$\Phi 200$	8		$\Phi 22$	590
HG-100	350	570	458	890	150	180	18	1350	600	75	157.5	1314	56	220	420	$\Phi 100$	$\Phi 180$	$\Phi 220$				700
HG-125	435	615	490	1020	165	200	18	1640	720	100	215	1619	56	290	440	$\Phi 125$	$\Phi 210$	$\Phi 250$	8	$\Phi 22$		1260
HG-150	505	615	490	1090	180	220	18	1640	720	100	215	1752	66	290	540	$\Phi 150$	$\Phi 240$	$\Phi 285$				1680
HG-175	578	725	548	1220	190	250	23	1640	720	100	205	1768	66	290	540	$\Phi 175$	$\Phi 295$	$\Phi 340$	12		$\Phi 22$	2420
HG-200	620	860	735	1445	190	250	23	2155	950	125	300	2204	66	305	700	$\Phi 200$	$\Phi 295$	$\Phi 340$				3000
HG-250	690	790	665	1445	230	300	45	2155	950	125	300	2224	66	305	700	$\Phi 250$	$\Phi 350$	$\Phi 395$	12	$\Phi 22$	3200	

Размеры воздуходувки HG с шумоизолирующим кожухом



Модель	A	B	C	E	G	J	L	L1	H1	H2	N	DN	D1	D	n	d	X1	Xmax	Y	Y1	Ymax	Z	Zmax	Вес воз. (кг)	Вес кожуха (кг)
HG-80	308	510	408	810	180	18	1350	600	56	220	105	Φ80	Φ160	Φ200	8	Φ18	660	2150	1600	870	1650	1700	1850	590	500
HG-100	350	570	458	890	180	18	1350	600	56	220	105	Φ100	Φ180	Φ220			660	2150	1600	930	1650	1700	1850	700	500
HG-125	435	615	490	1020	200	18	1640	720	56	290	105	Φ125	Φ210	Φ250			600	2250	1850	980	1900	2000	2240	1260	800
HG-150	505	615	490	1090	220	18	1640	720	66	290	134	Φ150	Φ240	Φ285		Φ22	600	2250	1850	980	1900	2000	2240	1680	800
HG-175	578	725	548	1220	250	23	1640	720	66	290	134	Φ200	Φ295	Φ3400			700	2450	2100	1100	2150	2000	2250	2420	900
HG-200	620	860	735	1445	250	23	2155	950	66	305	134	Φ200	Φ295	Φ340			760	2850	2400	1250	2450	2600	2900	3000	1300
HG-250	690	790	665	1445	300	45	2155	950	66	305	134	Φ250	Φ350	Φ395	12	760	2850	2400	1220	2450	2600	2900	3200	1300	



1	Электродвигатель	
2	Глушитель на входе	Q235
3	Воздуходувка	QT500
4	Рама	Швеллерная сталь
5	Гибкое сочленение	Каучук и фланец
6	Патрубос	
7	Предохранительный клапан	Алюминий
8	Манометр	SS304
9	Обратный клапан	HT250
10	Патрубос	
11	Шумоизолирующий кожух	
12	Антивибрационная прокладка	

Модель	F	G	DN	D1	D	Вес воз. (кг)	Вес кожуха (кг)
HG-50	105	140	Φ50	Φ125	Φ165	280	300
HG-65	115	150	Φ65	Φ145	Φ185	340	

Наш склад

